

PHASE 1 - PAGE 1 OF 3



DATE: 05-07-20 AUTHOR: GPRS, INC. PROJECT: Central Avenue Continuation

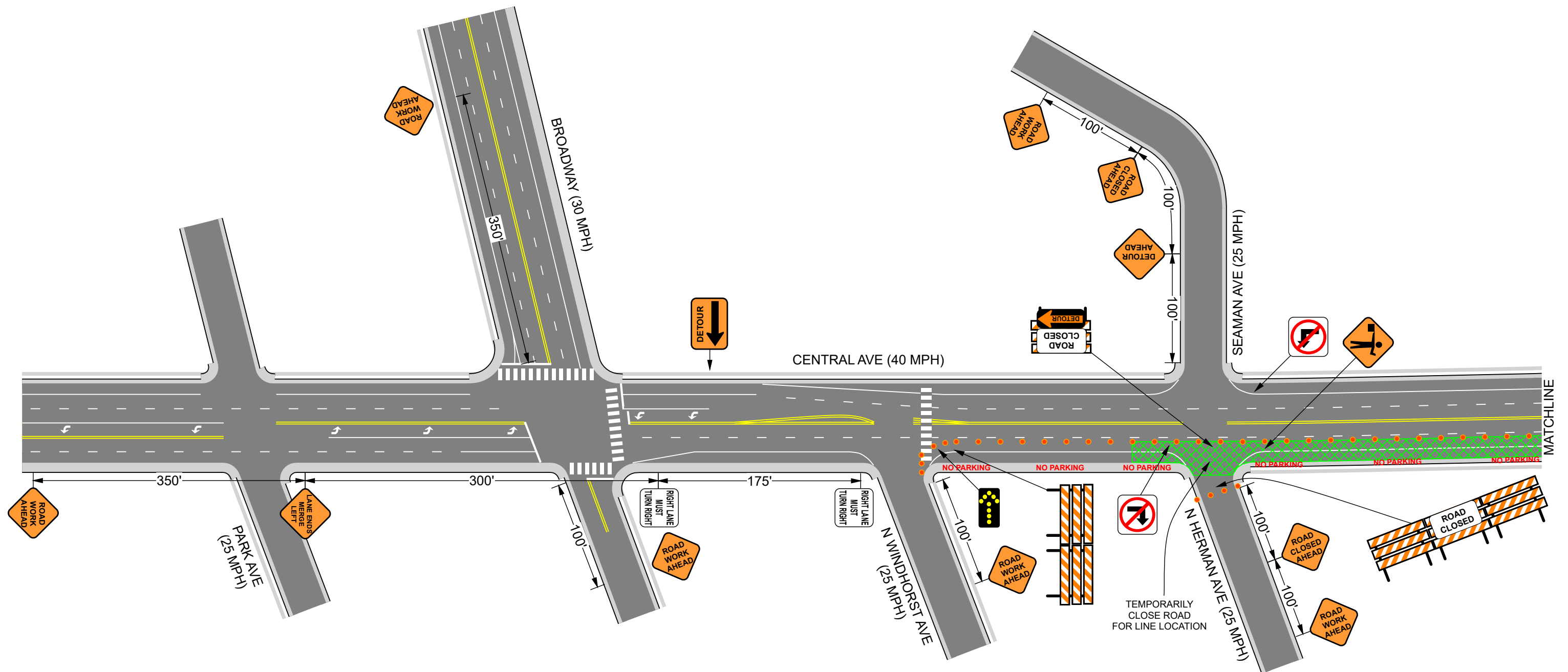
COMMENTS:

NOT TO SCALE

All Plan Details According to New York MUTCD

Cones for All Tapers and Tangents ●●●

Install NO PARKING Signs 72 Hours In Advance of Closure



PHASE 1 - PAGE 2 OF 3



DATE: 05-07-20 AUTHOR: GPRS, INC. PROJECT: Central Avenue Continuation

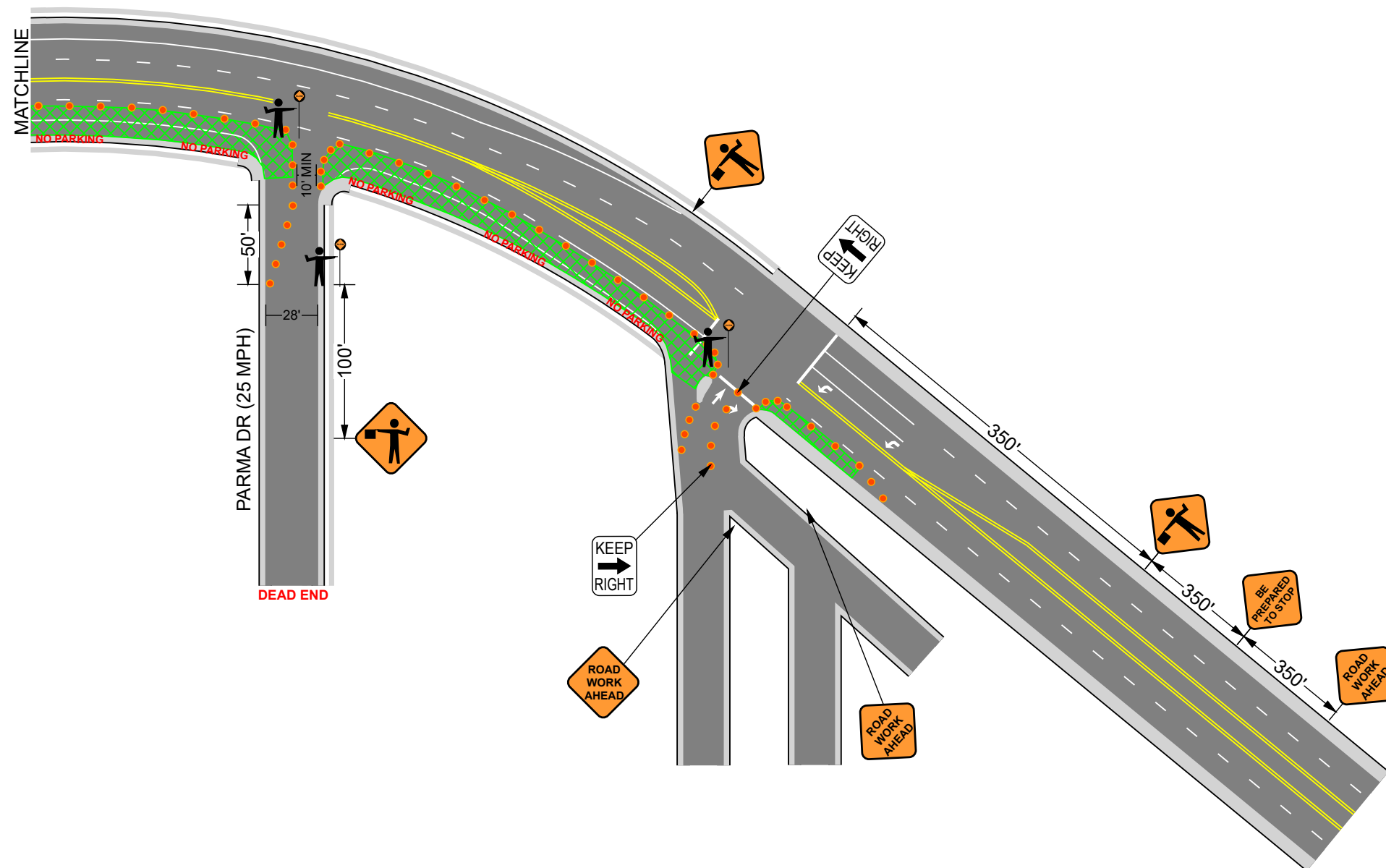
COMMENTS:

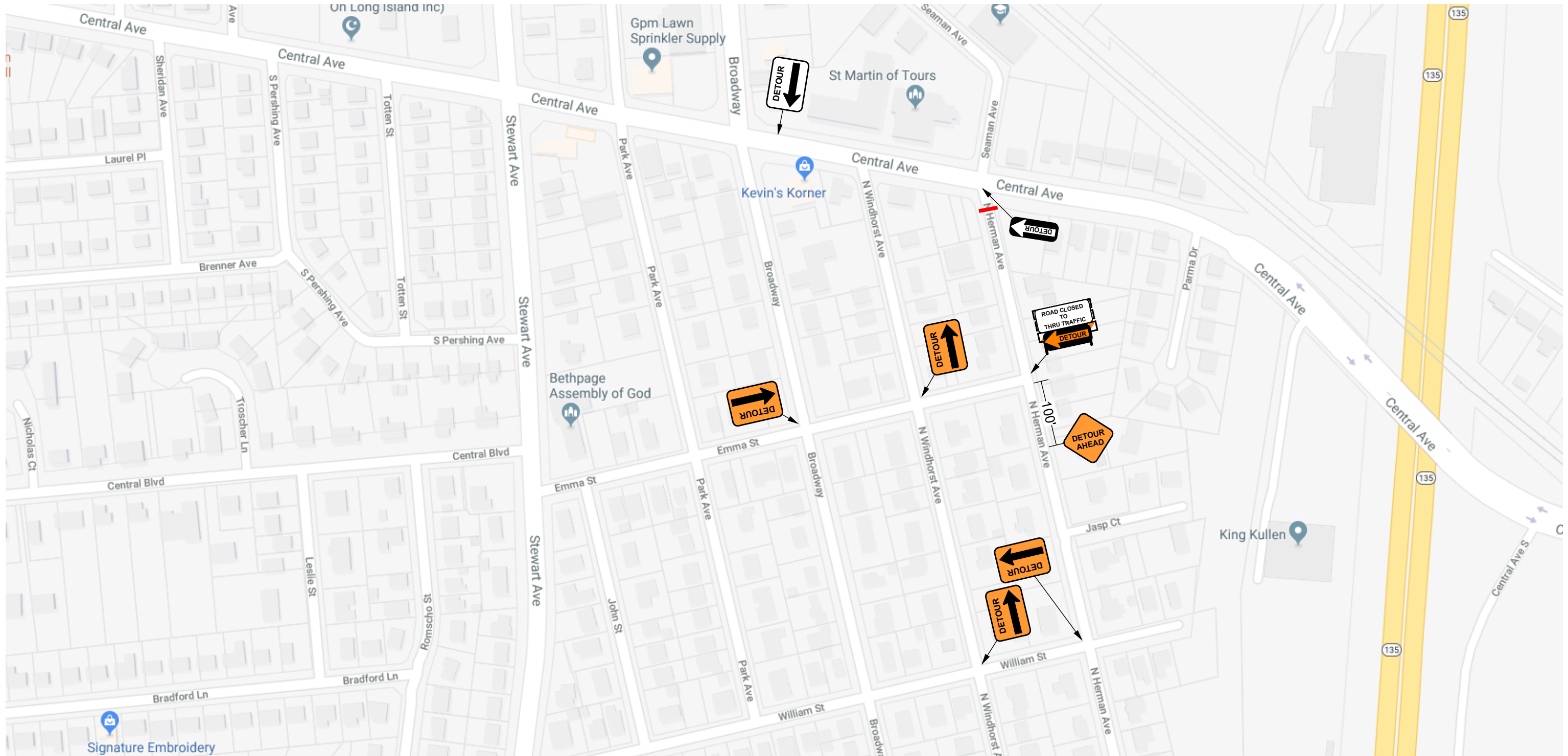
NOT TO SCALE

All Plan Details According to New York MUTCD




Cones for All Tapers and Tangents ●●●

Install NO PARKING Signs 72 Hours In Advance of Closure





PHASE 1 - PAGE 3 OF 3

 <p>master locators A  COMPANY</p>	<p>DATE: 05-07-20 AUTHOR: GPRS, INC. PROJECT: Central Avenue Continuation</p> <p>COMMENTS: NOT TO SCALE All Plan Details According to New York MUTCD White Detour Signs Reference Same Signs Other Pages</p> <div style="text-align: right;">  </div>
---	--

PHASE 2 - PAGE 1 OF 2



DATE: 05-07-20 AUTHOR: GPRS, INC. PROJECT: Central Avenue Continuation

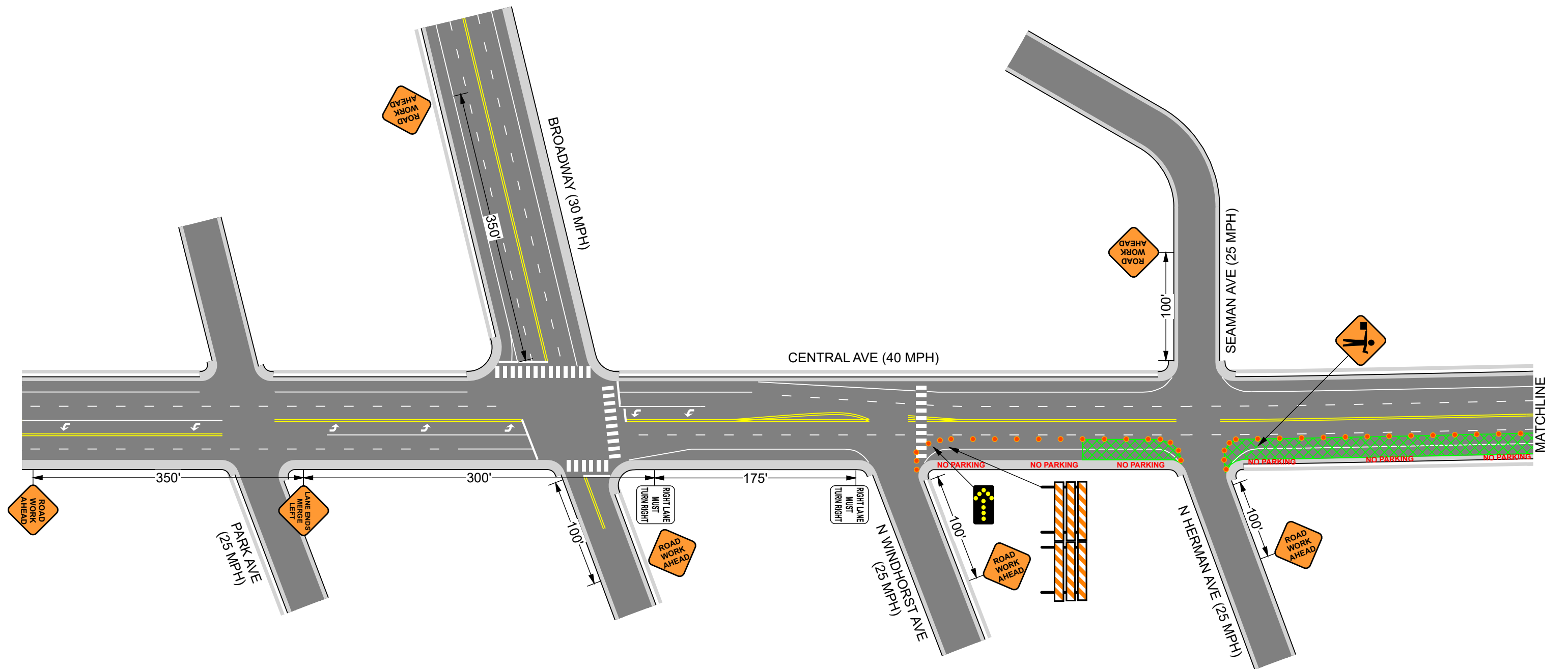
COMMENTS:

NOT TO SCALE

All Plan Details According to New York MUTCD

Cones for All Tapers and Tangents ●●●

Install NO PARKING Signs 72 Hours In Advance of Closure



PHASE 2 - PAGE 2 OF 2



DATE: 05-07-20 AUTHOR: GPRS, INC. PROJECT: Central Avenue Continuation

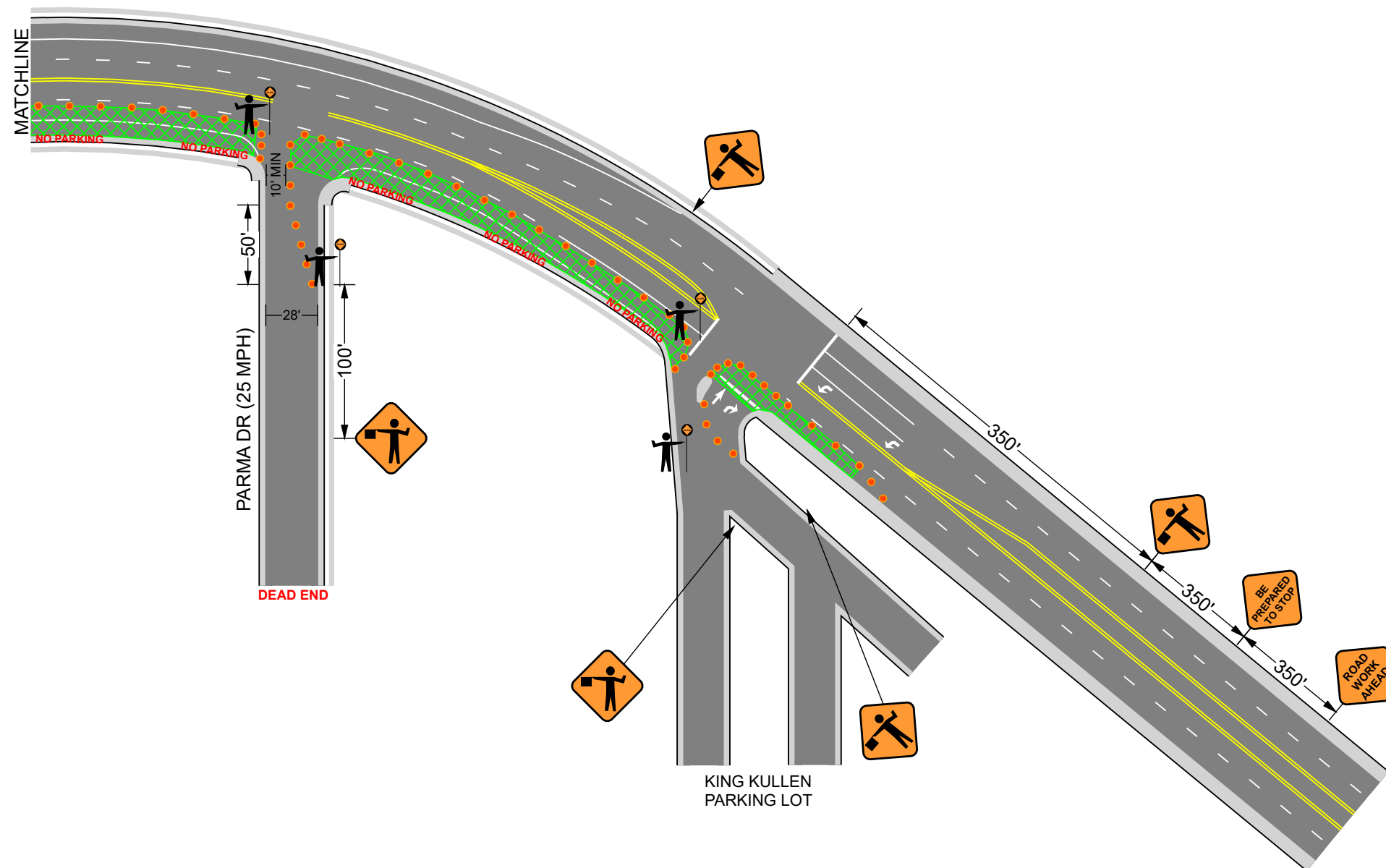
COMMENTS:

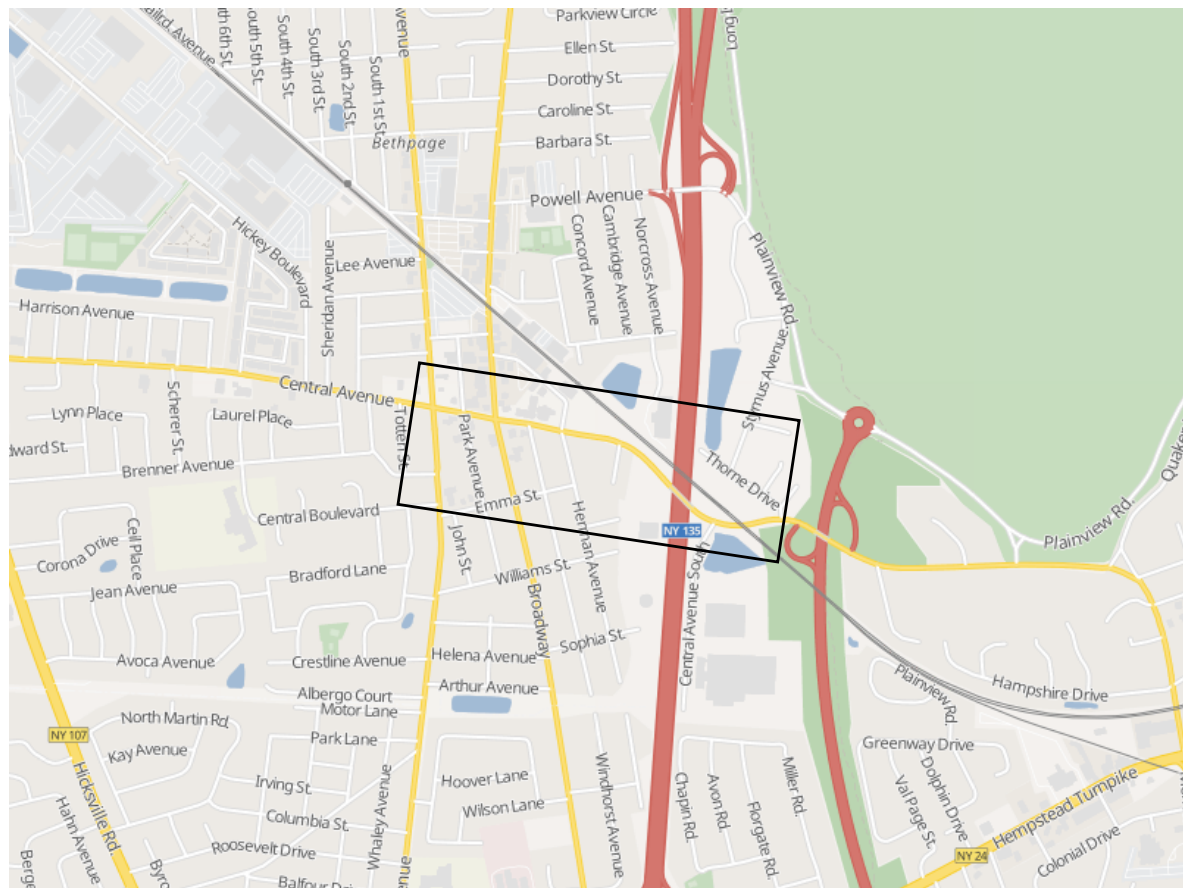
NOT TO SCALE

All Plan Details According to New York MUTCD




Cones for All Tapers and Tangents ●●●

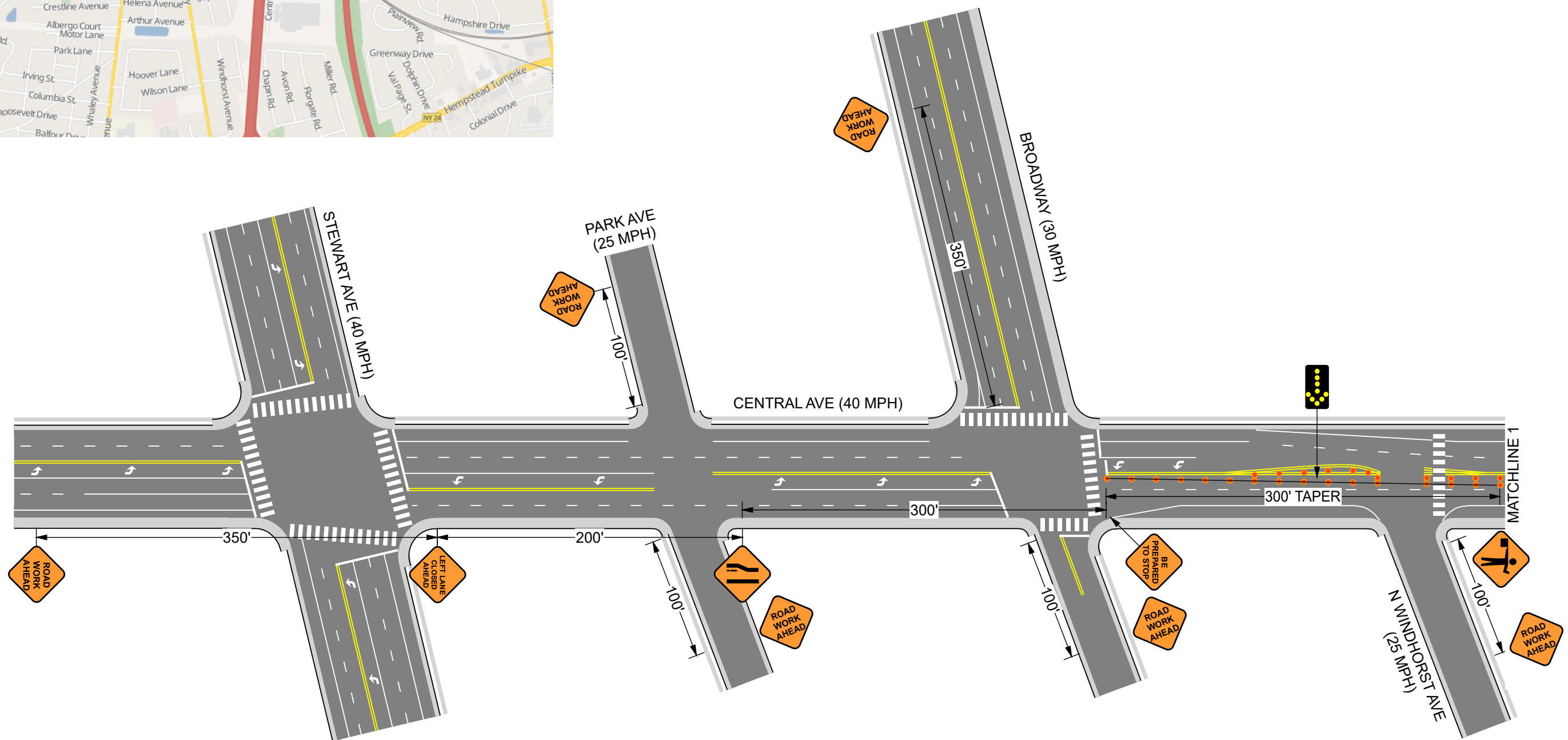
Install NO PARKING Signs 72 Hours In Advance of Closure







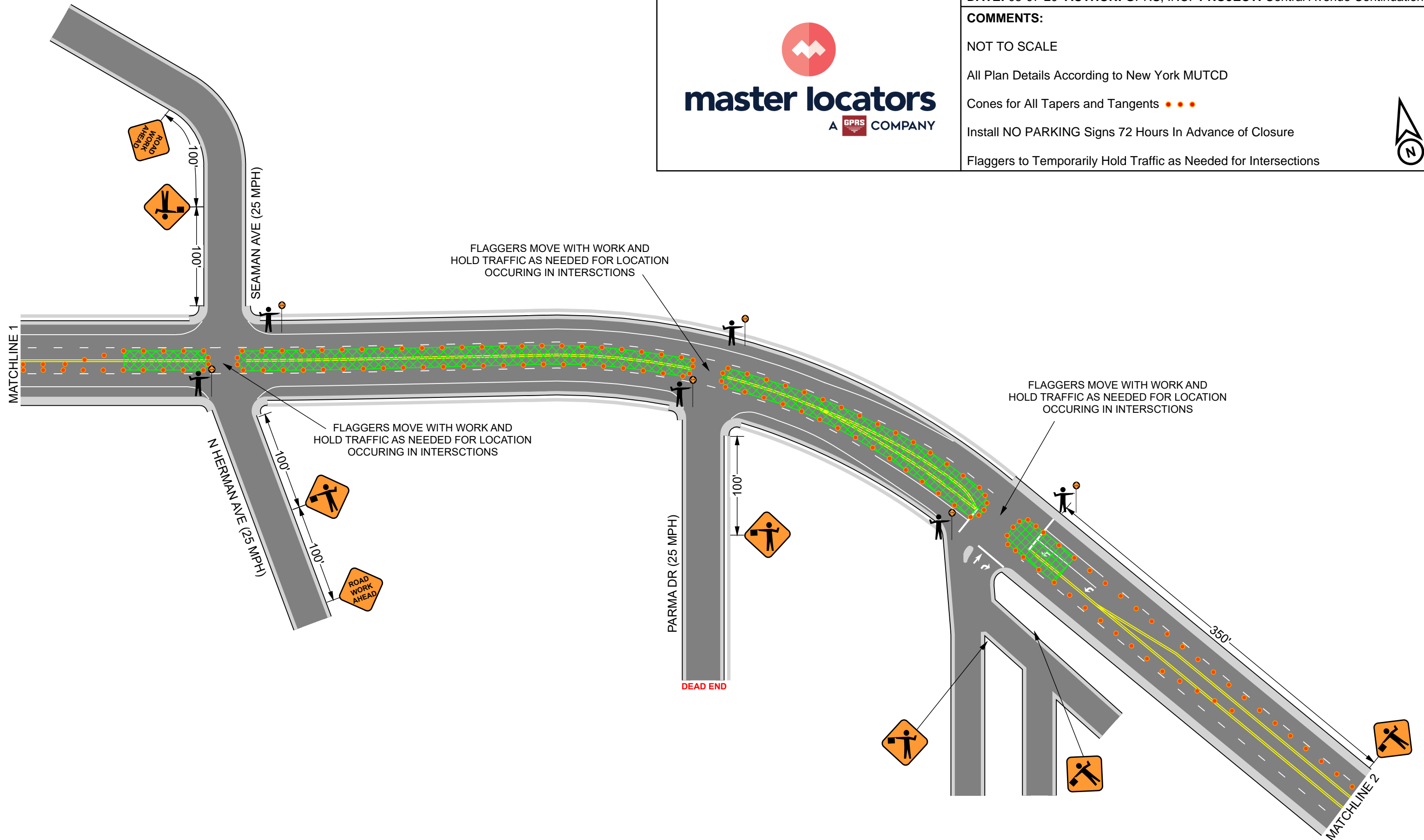
PHASE 3 - PAGE 1 OF 3

 master locators A  COMPANY	DATE: 05-07-20 AUTHOR: GPRS, INC. PROJECT: Central Avenue Continuation
	COMMENTS: NOT TO SCALE All Plan Details According to New York MUTCD Cones for All Tapers and Tangents ●●● Install NO PARKING Signs 72 Hours In Advance of Closure Flaggers to Temporarily Hold Traffic as Needed for Intersections
	



PHASE 3 - PAGE 2 OF 3

 master locators <small>A GPRS COMPANY</small>	DATE: 05-07-20 AUTHOR: GPRS, INC. PROJECT: Central Avenue Continuation
	COMMENTS: NOT TO SCALE All Plan Details According to New York MUTCD Cones for All Tapers and Tangents ●●● Install NO PARKING Signs 72 Hours In Advance of Closure Flaggers to Temporarily Hold Traffic as Needed for Intersections
	



PHASE 3 - PAGE 3 OF 3



DATE: 05-07-20 AUTHOR: GPRS, INC. PROJECT: Central Avenue Continuation

COMMENTS:

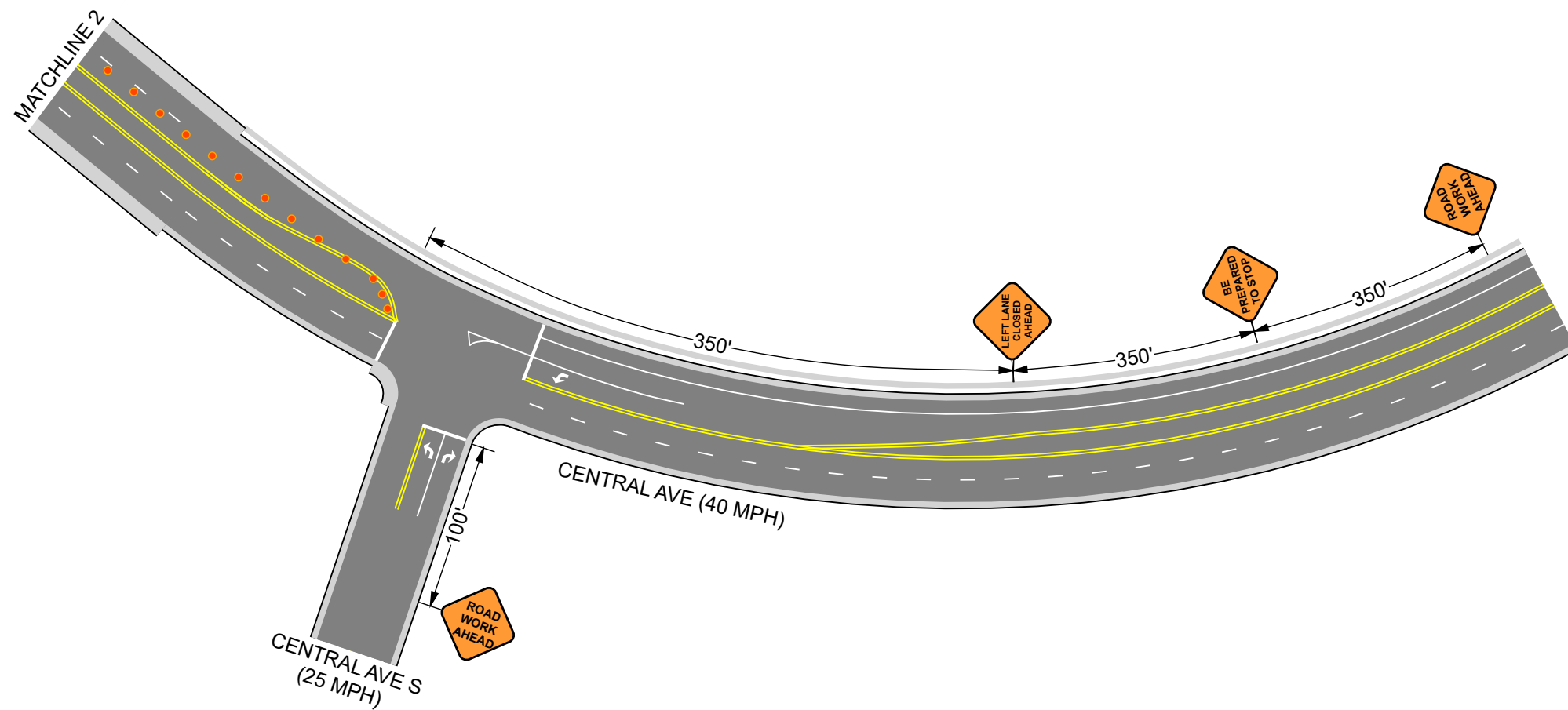
NOT TO SCALE

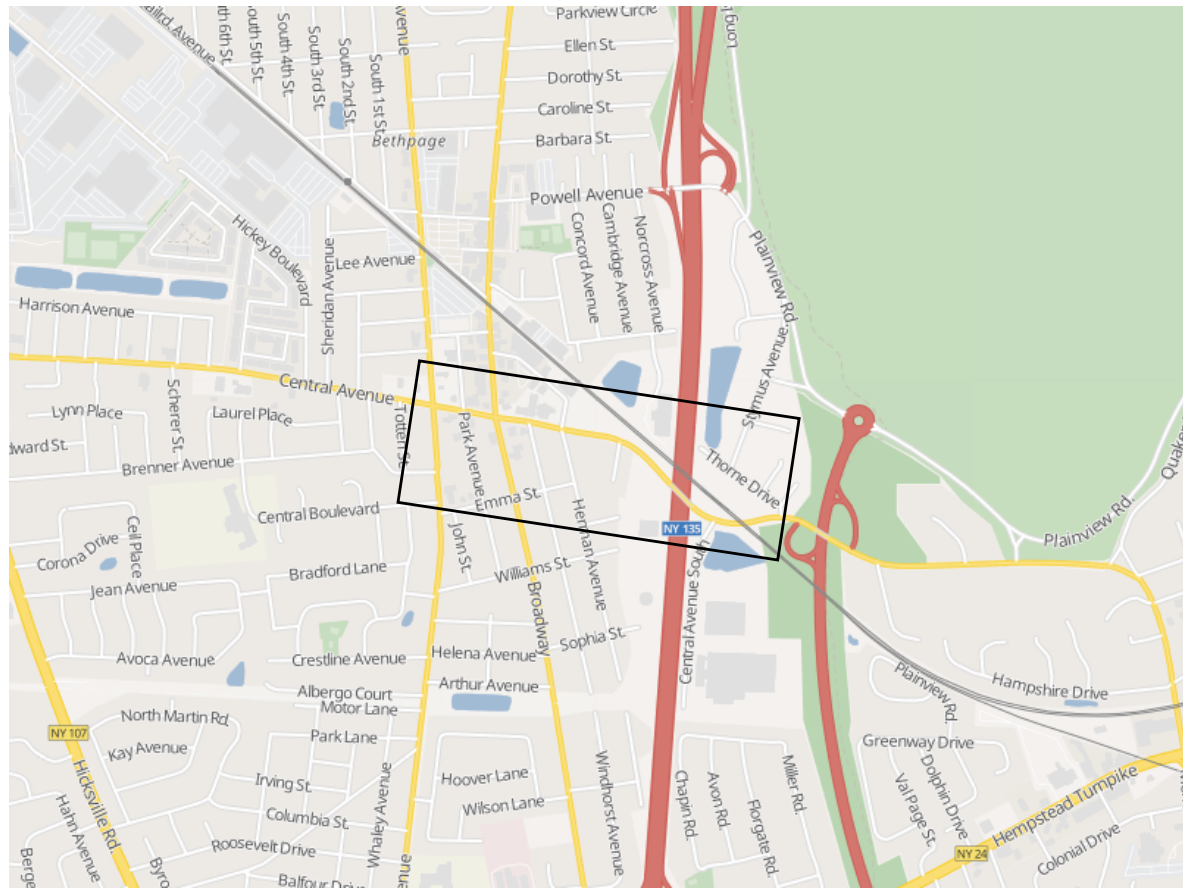
All Plan Details According to New York MUTCD

Cones for All Tapers and Tangents ●●●




Install NO PARKING Signs 72 Hours In Advance of Closure

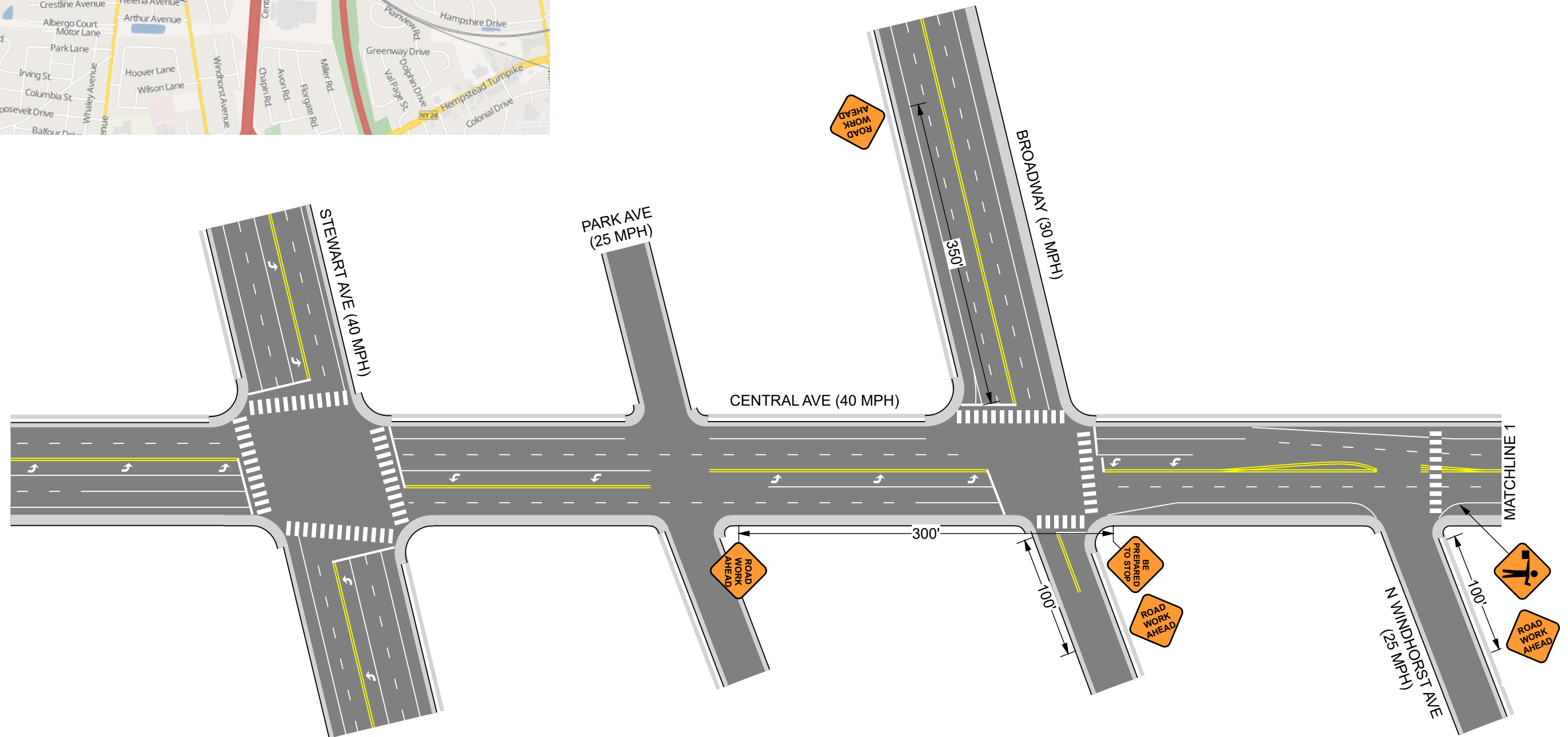
Flaggers to Temporarily Hold Traffic as Needed for Intersections






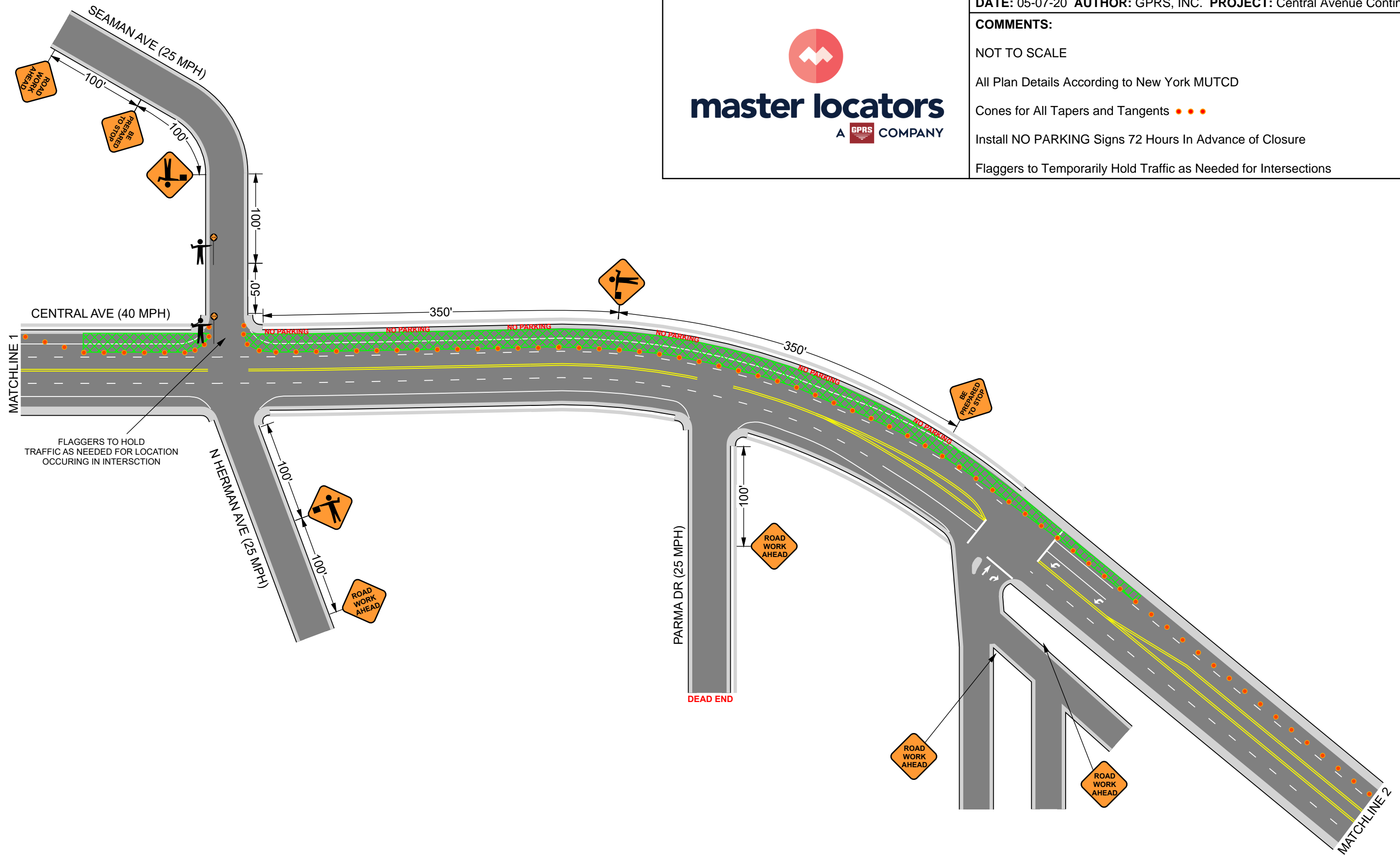
PHASE 4 - PAGE 1 OF 3

 master locators A  COMPANY	DATE: 05-07-20 AUTHOR: GPRS, INC. PROJECT: Central Avenue Continuation
	COMMENTS: NOT TO SCALE All Plan Details According to New York MUTCD Cones for All Tapers and Tangents ●●● Install NO PARKING Signs 72 Hours In Advance of Closure Flaggers to Temporarily Hold Traffic as Needed for Intersections
	



PHASE 4 - PAGE 2 OF 3

 master locators <small>A GPRS COMPANY</small>	DATE: 05-07-20 AUTHOR: GPRS, INC. PROJECT: Central Avenue Continuation
	COMMENTS:
	NOT TO SCALE
	All Plan Details According to New York MUTCD
	Cones for All Tapers and Tangents ●●●
Install NO PARKING Signs 72 Hours In Advance of Closure	
Flaggers to Temporarily Hold Traffic as Needed for Intersections	



PHASE 4 - PAGE 3 OF 3



DATE: 05-07-20 AUTHOR: GPRS, INC. PROJECT: Central Avenue Continuation

COMMENTS:

NOT TO SCALE

All Plan Details According to New York MUTCD

Cones for All Tapers and Tangents ●●●

Install NO PARKING Signs 72 Hours In Advance of Closure

Flaggers to Temporarily Hold Traffic as Needed for Intersections

